



Trophy Peak Series



SERIES FEATURES

- ✓ 1-5 Bedroom Options
- ✓ 1-3 Bath Options
- ✓ On-Demand Electric Water Heaters
- ✓ Hinged Roof Series
- ✓ 6/12 & 10/12 Roof Pitch
- ✓ Open floorplan with or without loft



Quality, engineered cabin homes created with timeless craftsmanship for how you live, work and play.

Features



All of our cabins are built in our Kentucky factory to the current Residential Codes adopted by the state of Kentucky backed by engineered plans and our 41 Point Inspection Process. Current codes adopted by Kentucky are the Kentucky 2018 Residential Code, based on the 2015 IBC and 2015 IRC for One and Two family Dwellings and Kentucky specific amendments. Check with your Sales Rep for any code questions for your specific location.

Structural Features

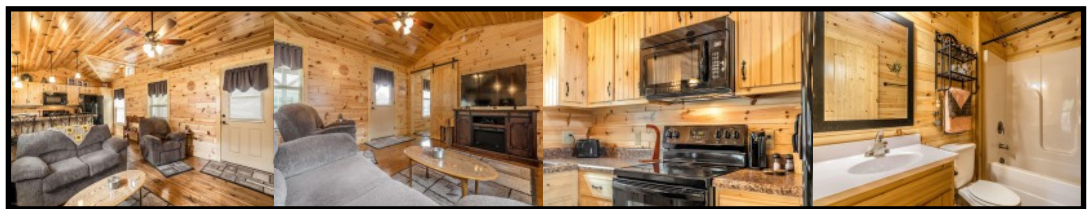
- **SIZES** Single: 14' & 16' wide / Double: 24'-30' wide, up to 52' long
- LP Smart Panel Siding
- Roof pitch starts at 5/12
- Knotty Pine walls / ceilings
- 2x10 PT floor joists 16" OC
- 3/4 T&G sturdifloor subfloor
- Laminate plank flooring
- 2x6 Exterior walls 16" OC
- 2x6 Rafters 16" OC
- 5/8 OSB Roof decking / felt paper
- 28 Gauge metal roof
- Insulation to code
- Pine cabinets / vanities
- LG HI-MACS counter tops
- 6 Windows / 2 Doors
- Free delivery - First 100 miles

Electrical Features

- 200 AMP Panels depending on cabin size
- Light fixtures
- Exterior lights / outlets
- Smoke detectors hard wired with battery backup
- Wired to code
- 220 plugs - gauge wiring based on amperage (12-6 gauge)
- ARC Fault breakers
- Cat6/Coax on request

Plumbing Features

- Plumbing fixtures
- PEX water lines with PEX fittings
- 3/4" main supply line with 1/2" supply lines
- Bathroom vented to exterior
- All drains vented
- Water Heater - tank and tank-less available
- Plumbing fixtures stubbed to floor



We are a modular certified builder. Features may change based on your state code. See your sales consultant for details.



Customer Responsibility

- Permits
- Appliances and furniture
- Foundation per engineered drawings
- Hook up of electric and plumbing on site
- HVAC
- Porch construction (Available in select areas)
- Floor / foundation insulation



Floorplans

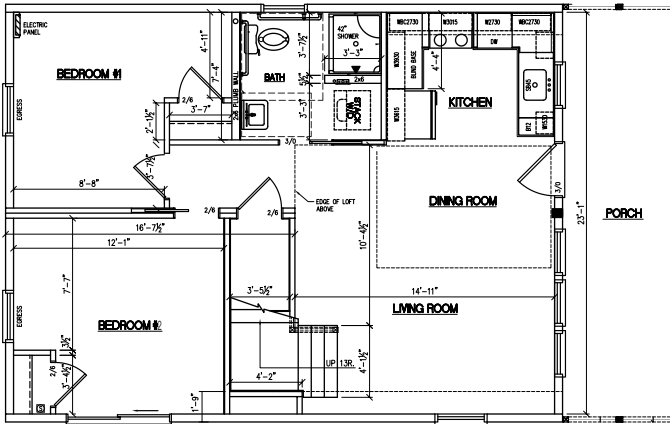
(502)921-0002



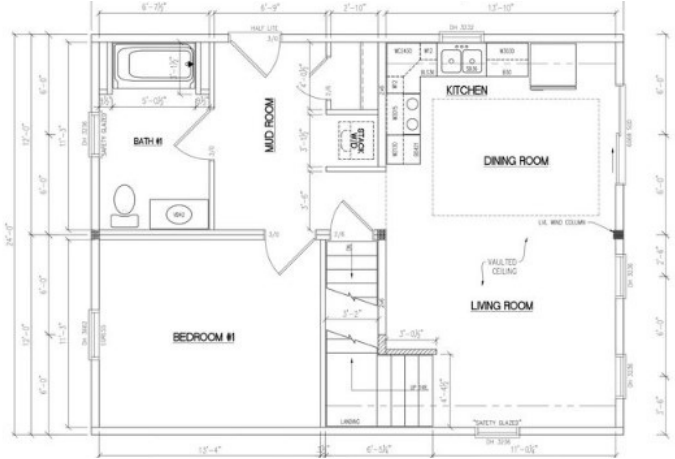
WWW.AMISHMADECABINS.COM

Several Sizes Available, visit our website for more floor plan options!

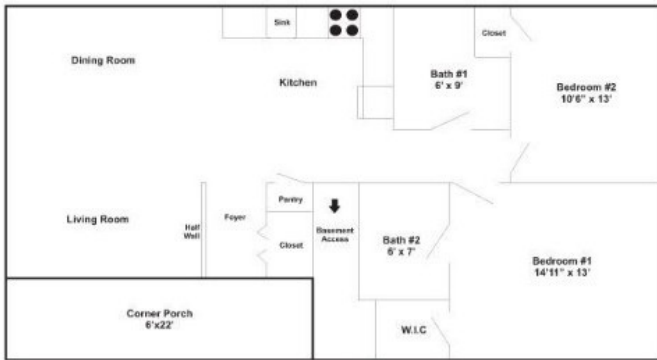
24X32 2 BED W/LOFT



24X32 1 BED W/LOFT



26X48 2 BED W/PORCH



30X52 2 BED W/LOFT



28X52 3 BED



26X40 1 BED W/LOFT





PRICING CHANGING FREQUENTLY DUE TO LUMBER MARKET, CHECK WITH SALES AGENT FOR 7 DAY PRICE QUOTE.

Starting price includes basic options. Upgrade pricing listed below. Pricing includes delivery within 100 miles from Shepherdsville, KY for in state deliveries. Deliveries out of state, check with your sales rep for a quote. Add'l mileage in state is \$9.50/mile.

Cross Timber Series and Trophy Peak Series

Cross Timber Series:

\$163/sq foot

5/12 roof pitch

2x6 walls

2x10 floors

Smart Panel Siding

Two Sections connected on-site
Widths are 14' or 16'

Length Max is 52'

Includes the items showing on the floorplans in regards to window and door count. Pricing based on our standard options.

Upgrades available.

Trophy Peak Series:

\$179/sq foot

*Price does not include site setup - your sales associate will provide a quote for site setup.

This includes the staircase and loft with railing.
Average roof pitch when raised on site is 10/12 roof pitch.

24'-30' Wide Cabins

2x6 walls

2x10 floors

**Can do a 6/12 Roof pitch without loft - Hinged roof would be raised on site
6/12 Pitch Is \$159/sq foot plus price of site setup.

Includes the items showing on the floorplans in regards to window and door count. Pricing based on our standard options.

Upgrades available.

Standard Trophy Peak Sizes

Width: 24', 26', 28', 30' and 32'

Length: 32', 36', 40', 44', 48', 52' and 56'

Other Options to add:

Reversible Gables (2)	\$2.50/sq foot - sq foot of total cabin size
Cosmetic Dormers (2)	\$1,200
Paint fiberglass door(s)	\$140 per side
White wash interior walls	\$3.80 sq foot -sq foot of total cabin size
Stained kitchen cabinets	starts at \$1125 - based on LF of cabinets
Additional window	\$500 each
Gable window	\$300 each
Shutters	\$75/set
6' sliding glass door	\$1,875
Barn door	\$675
Screen Door	\$375
Additional Cabinets	\$345 per LF
Extended Kitchen w. Raised Bar	\$450 LF
Board and Batten Siding	\$3/sq foot - sq foot of total cabin size
Lap Siding	\$4/sq foot - sq foot of total cabin size
Split Cedar Log Siding w/ smooth corners	\$18/sq foot - sq foot of total cabin size
Split Cedar with Butt and Pass corners	\$26/sq foot - sq foot of total cabin size
Porch Kit	\$35/Sq foot of deck

Engineered plans - site specific starting at \$2300

Pricing subject to change, contact us for current pricing.

*Living Large series will require additional on-site work to raise the roof from your contractor.

Prices do not include site prep, or any onsite work needed.

Amish Made Cabins

SITE PREPARATION INFORMATION FOR CABINS



All cabins need a good pad to prevent leveling issues with your cabin that are not covered under your cabin warranty. Site leveling and preparation is the purchaser's responsibility. Please refer to your cabin contract for height and width requirements for clearance for your cabin. Cabins are extremely heavy and proper pad prep is essential.

CHECK LIST FOR CABIN SITE AND DELIVERY PREP:

- Good access for delivery
- Ground surface level
- Pad site prepared before cabin delivery
- Stable ground conditions
- Any obstructions such as fences, gates, low hanging branches removed before delivery
- Customer will need to have 811 clearance before anchoring.
- Verify what type of foundation/pad is required by state and local government.

Our method is to deliver the cabin directly off our trailer onto the gravel pad or concrete pad, or by crane set. For the off load method to work, the pad site must be less than 6" above grade and not more than 8" below grade to allow our trailer to back in over them and offload. The truck and trailer will then carefully drive out from under the cabin setting it down on top of the concrete blocks. We require a minimum of 70 to 100ft. of clearance straight out from the end of the site so that our delivery rig can pull out from under the cabin, on longer cabins, more space will be needed. When preparing your site know that we must back our trailer out over your site. It is best if the rear tires of the trailer can be within 6' of where you would like the back of the cabin to be placed. We then tilt our trailer and pull away from the home. Pictures of your pad site need to be provided before delivery is scheduled.

FOUNDATION OPTIONS:

Before you get too far into the project you will want to make sure there aren't any codes or restrictions that limit what you can put on the build site. Please familiarize yourself with zoning laws and development restrictions that might put a crimp on your log cabin dreams. Check with your local municipality to see whether you will need permits. * Your county, municipality, and/or State determine what type of foundation is needed.

GRAVEL AND CONCRETE PAD:

•GRAVEL: (Pad option for all cabins up to 900 square feet. Not an option for Multi-Sections)
For a gravel pad site, you will need 4" of road base with 1' extra space on each side. For example, if your cabin is 14' x 18', you need a gravel pad that is 16' x 20'. Gravel needs to be compacted down before home is delivered. This means the pad needs to be compacted down to the point of feeling like concrete. We can not deliver if your pad is not properly compacted down. You will also have leveling issues with your cabin that are not covered under your cabin warranty.

•CONCRETE PAD: (Pad option for all cabins)

A concrete pad needs to be poured at 6" - with a footer that is 12" wide and 12" deep around the perimeter to stabilize the pad. Concrete slab needs to be reinforced for a house slab. See Skid Placement Diagram for your cabin width. If your pad is not reinforced or does not have a proper footer, you may run into issues with your slab not supporting your cabin over time, which is not covered under your cabin warranty.

•CRAWLSPACE OR BASEMENT

The crawlspace or basement needs to be no taller than 30" on one width-end for the delivery team to place the cabin onto the foundation. If the height exceeds 30", temporary fill may be needed for trailer placement.

The foundation must be constructed using cinder blocks, poured concrete, precast or insulated concrete. Foundation also needs double-treated sill plates on top of the wall. Upon delivery, the on-site crew or contractors will secure the cabin using strong ties.

Crawlspace



- Dry-Stack Options / Spot Piers
Cabins can also be placed on pad and pier systems but they MUST be level prior to delivery. Three footings running 10-12 inches longer than the length of the cabin are required for this type of set.



These types of foundations require anchor points different than the basement or crawlspace. Anchors into the footers or pad are generally acceptable as long as they are to the local codes and do not interfere with the delivery trailer's pathway onto the foundation.

- Dry-Stack Options / Spot Piers Cont.
These pictures illustrate dry-stacking piers every 8 feet on a full concrete pad, and then on in-ground concrete pads.

- Crane Set
In some situations a cabin delivery may require heavy equipment to set the cabin. Any equipment needed is the customer's responsibility. On double wide set ups, a second crew will be sent and the set up can take a week or longer to complete. Heavy equipment is not always necessary, mainly it will be needed in steep areas our trucks may not be able to access the property.



502-921-0002
amishmadecabins.com