

Certified Modular Cabins

Shown with
optional log siding



Trophy Peak
Series



Built & Delivered • Pine Interior • Insulated • Electric • Plumbing

772 Cedar Grove Rd Shepherdsville, KY
502-921-0002 | amishmadecabins.com



Torch Award Winner

Very Small Business, 2015
BBB serving Louisville, Southern Indiana
and Western Kentucky

Not responsible for typographical errors. Prices subject to change without notice. We do not offer rent to own on our log cabins. Due to various local codes foundation and permits are the responsibility of the customer.

Quality, engineered cabin homes created with timeless craftsmanship for how you live, work and play.

Features



All of our cabins are built in our Kentucky factory to the current Residential Codes adopted by the state of Kentucky backed by engineered plans and our 41 Point Inspection Process. Current codes adopted by Kentucky are the Kentucky 2018 Residential Code, based on the 2015 IBC and 2015 IRC for One and Two family Dwellings and Kentucky specific amendments. Check with your Sales Rep for any code questions for your specific location.

Structural Features

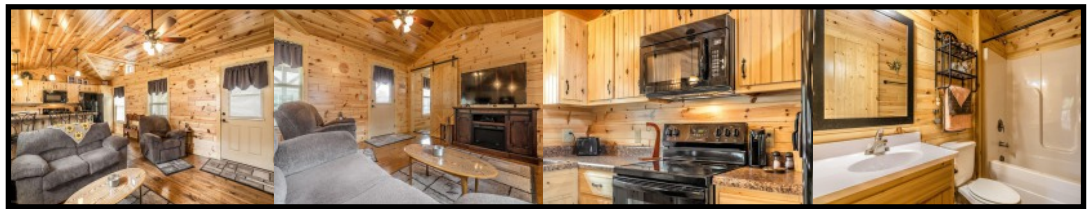
- **SIZES** Single: 14' & 16' wide / Double: 24'-30' wide, up to 52' long
- LP Smart Panel Siding
- Roof pitch starts at 5/12
- Knotty Pine walls / ceilings
- 2x10 PT floor joists 16" OC
- 3/4 T&G sturdifloor subfloor
- Laminate plank flooring
- 2x6 Exterior walls 16" OC
- 2x6 Rafters 16" OC
- 5/8 OSB Roof decking / felt paper
- 28 Gauge metal roof
- Insulation to code
- Pine cabinets / vanities
- LG HI-MACS counter tops
- 6 Windows / 2 Doors
- Free delivery - First 100 miles

Electrical Features

- 200 AMP Panels depending on cabin size
- Light fixtures
- Exterior lights / outlets
- Smoke detectors hard wired with battery backup
- Wired to code
- 220 plugs - gauge wiring based on amperage (12-6 gauge)
- ARC Fault breakers
- Cat6/Coax on request

Plumbing Features

- Plumbing fixtures
- PEX water lines with PEX fittings
- 3/4" main supply line with 1/2" supply lines
- Bathroom vented to exterior
- All drains vented
- Water Heater - tank and tank-less available
- Plumbing fixtures stubbed to floor



We are a modular certified builder. Features may change based on your state code. See your sales consultant for details.



Customer Responsibility

Permits
Appliances and furniture
Foundation per engineered drawings
Hook up of electric and plumbing on site
HVAC
Porch construction (Available in select areas)
Floor / foundation insulation



Appalachian Series



SERIES FEATURES

- ✓ 1-2 Bedroom Options
- ✓ 1-2 Bath Options
- ✓ On-Demand Electric Water Heaters
- ✓ 704 Sq. Ft. to 832 Sq. Ft. floor plans
- ✓ Open Kitchens
- ✓ Optional Porch





Floorplans

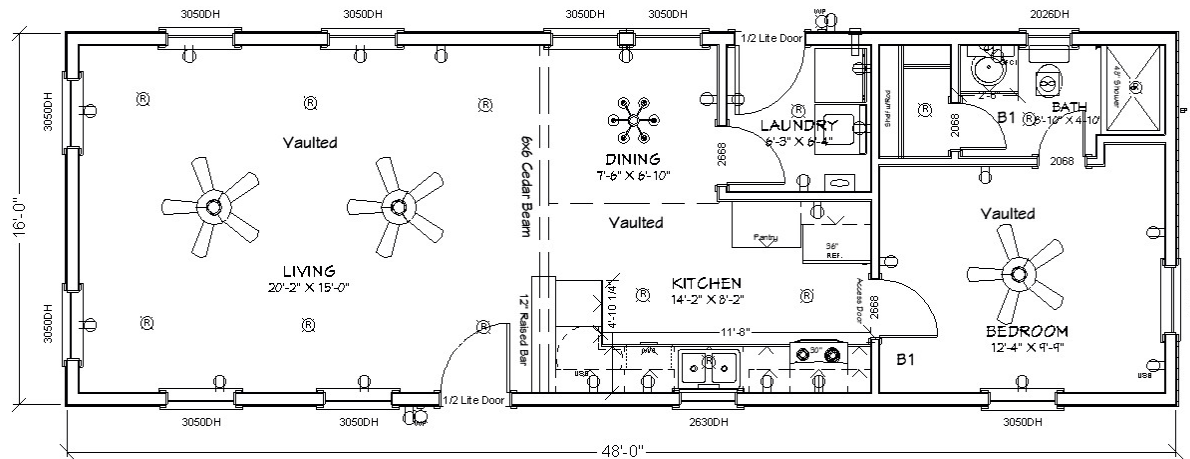


(502)921-0002

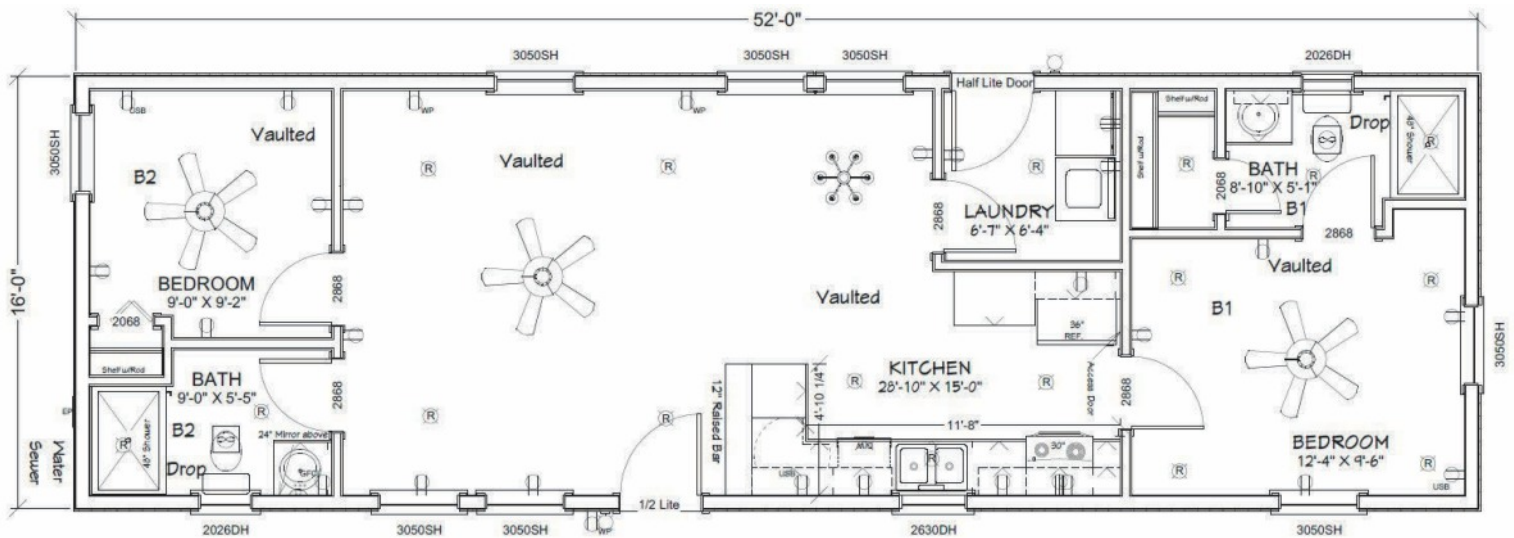


WWW.AMISHMADECABINS.COM

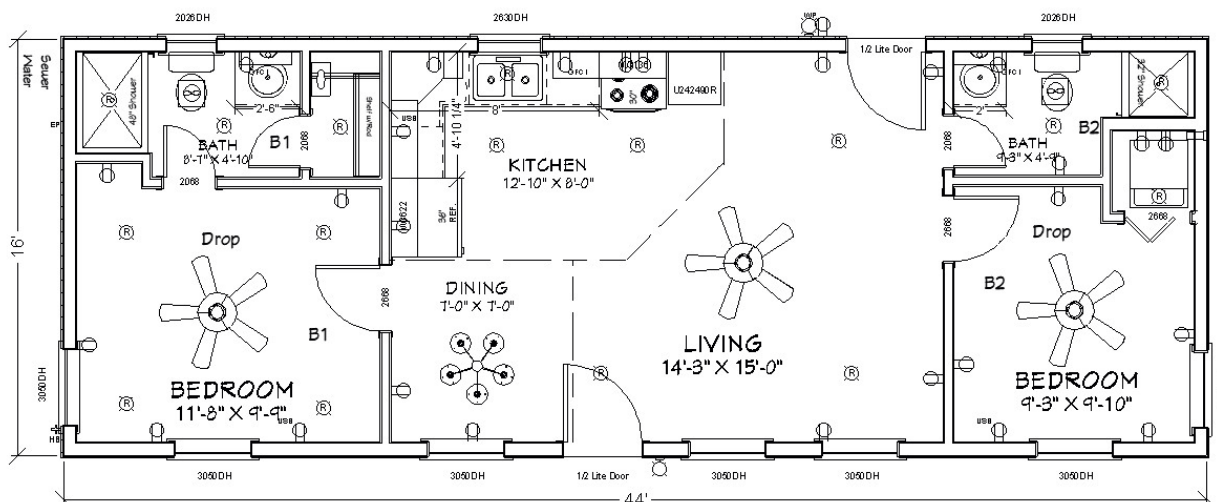
APPALACHIAN 101 / 16X48 / 768 SQ FT / 1 BED - 1 BATH



APPALACHIAN 102 / 16X52 / 832 SQ FT / 2 BED - 2 BATH



APPALACHIAN 103 / 16X44 / 704 SQ FT / 2 BED - 2 BATH



Starting price includes basic options. Upgrade pricing listed below. Pricing includes delivery within 100 miles from Shepherdsville, KY for in state deliveries. Deliveries out of state, check with your sales rep for a quote. Add'l mileage in state is \$9.50/mile.

APPALACHIAN CABIN 101

Basic Options: \$111,767

| 768 Sq Feet, 1 Bed 1 Bath | Included in Base Price | Upgrades | | | | | |
|--------------------------------|-------------------------------------|----------------------|---------|--------------------------|---------------------|---------------------|-----------------------|
| Exterior | Smart Panel | Board & Batten | \$2,589 | LP Smart Lap | \$8,365 | 8" Split Cedar Log* | \$16,101 |
| Wall Finish | Clear Coat Finish | Airstone Accent Wall | \$27/SF | Wainscot Accent Wall | \$9 / LF (3ft high) | Stained trim | \$4.50/sq ft of cabin |
| Walls | Ponderosa Pine 8" VBoard, clearcoat | Whitewashed Pine | \$1,536 | Painted White 6" Shiplap | \$3,650 | | |
| Ceiling | Ponderosa Pine VBoard, clearcoat | Whitewashed Pine | \$1,536 | Painted White 6" Shiplap | \$2,737 | | |
| Flooring | Laminate Plank Flooring | Vinyl Plank | \$3,421 | | | | |
| Cabinets | Pine | Rustic Hickory | \$1,782 | Painted | \$4,086 | | |
| Other Options (by size) | | Cosmetic Dormers (2) | \$1,350 | Reversible Gables (2) | \$3,150 | Shutters | \$72/set |

APPALACHIAN CABIN 102

Basic Options: \$127,970

| 832 Sq Feet, 2 Bed 2 Bath | Included in Base Price | Upgrades | | | | | |
|--------------------------------|-------------------------------------|----------------------|---------|--------------------------|---------------------|---------------------|-----------------------|
| Exterior | Smart Panel | Board & Batten | \$2,310 | LP Smart Lap | \$7,383 | 8" Split Cedar Log* | \$14,212 |
| Wall Finish | Clear Coat Finish | Airstone Accent Wall | \$27/SF | Wainscot Accent Wall | \$9 / LF (3ft high) | Stained trim | \$4.50/sq ft of cabin |
| Walls | Ponderosa Pine 8" VBoard, clearcoat | Whitewashed Pine | \$1,664 | Painted White 6" Shiplap | \$3,935 | | |
| Ceiling | Ponderosa Pine VBoard, clearcoat | Whitewashed Pine | \$1,664 | Painted White 6" Shiplap | \$2,966 | | |
| Flooring | Laminate Plank Flooring | Vinyl Plank | \$3,421 | | | | |
| Cabinets | Pine | Rustic Hickory | \$1,862 | Painted | \$4,198 | | |
| Other Options (by size) | | Cosmetic Dormers (2) | \$1,350 | Reversible Gables (2) | \$3,150 | Shutters | \$72/set |

APPALACHIAN CABIN 103

Basic Options: \$110,301

| 704 Sq Feet, 2 Bed 2 Bath | Included in Base Price | Upgrades | | | | | |
|--------------------------------|-------------------------------------|----------------------|---------|--------------------------|---------------------|---------------------|-----------------------|
| Exterior | Smart Panel | Board & Batten | \$2,466 | LP Smart Lap | \$7,287 | 8" Split Cedar Log* | \$14,082 |
| Wall Finish | Clear Coat Finish | Airstone Accent Wall | \$27/SF | Wainscot Accent Wall | \$9 / LF (3ft high) | Stained trim | \$4.50/sq ft of cabin |
| Walls | Ponderosa Pine 8" VBoard, clearcoat | Whitewashed Pine | \$3,142 | Painted White 6" Shiplap | \$3,421 | | |
| Ceiling | Ponderosa Pine VBoard, clearcoat | Whitewashed Pine | \$3,485 | Painted White 6" Shiplap | \$2,509 | | |
| Flooring | Laminate Plank Flooring | Vinyl Plank | \$3,137 | | | | |
| Cabinets | Pine | Rustic Hickory | \$1,543 | Painted | \$3,459 | | |
| Other Options (by size) | | Cosmetic Dormers (2) | \$1,350 | Reversible Gables (2) | \$3,150 | Shutters | \$72/set |

*Insulation for walls and ceiling done to state code.

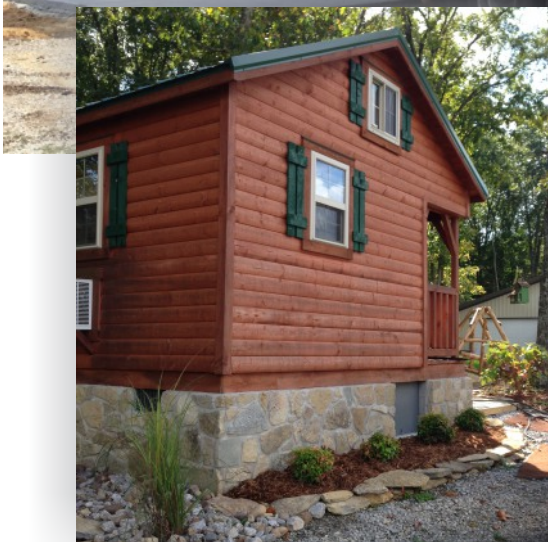
*We can prep for a mini split system by creating a channel in the wall for a drain line, and installing a disconnect on the cabin.

*Log Siding quote is with Smooth Corners. Butt & Pass Log corners additional \$8,853.

*Porches and On site setup is additional.



Boone Series



SERIES FEATURES

- ✓ 1 Bedroom Options
- ✓ 1 Bathroom
- ✓ On-Demand Electric Water Heaters
- ✓ 392 sq feet to 608sq feet floor plans
- ✓ Inset Corner Porch
- ✓ Optional dormers



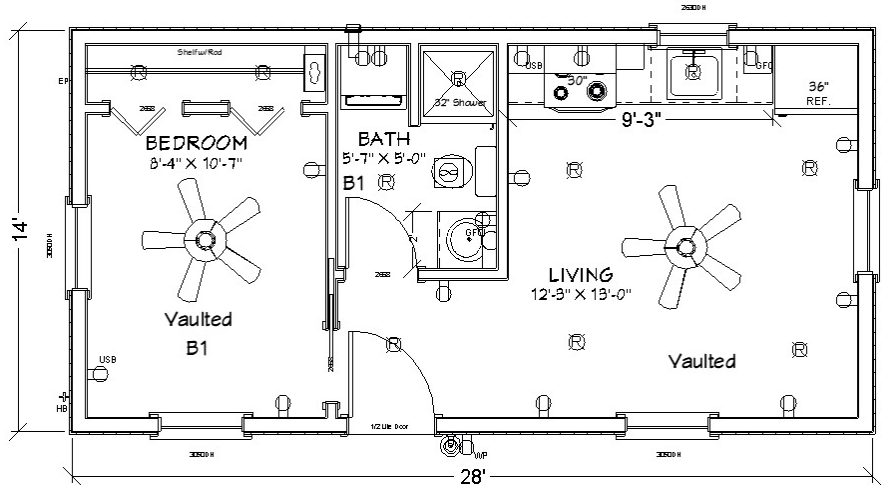
Floorplans

(502)921-0002

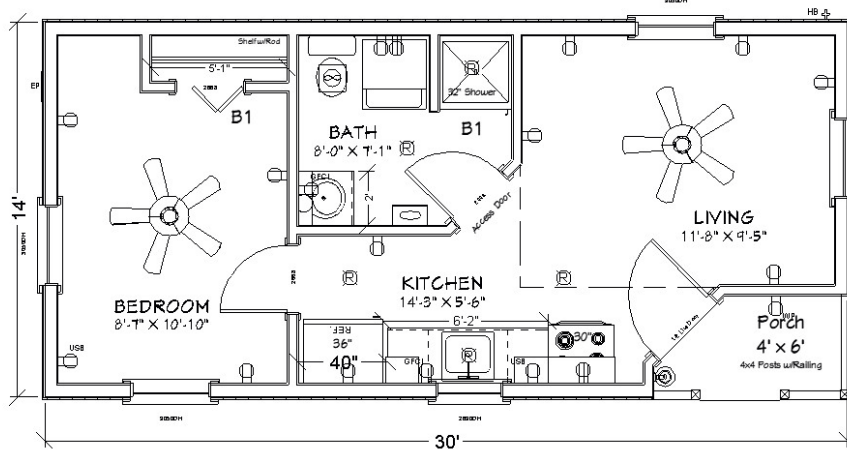


WWW.AMISHMADECABINS.COM

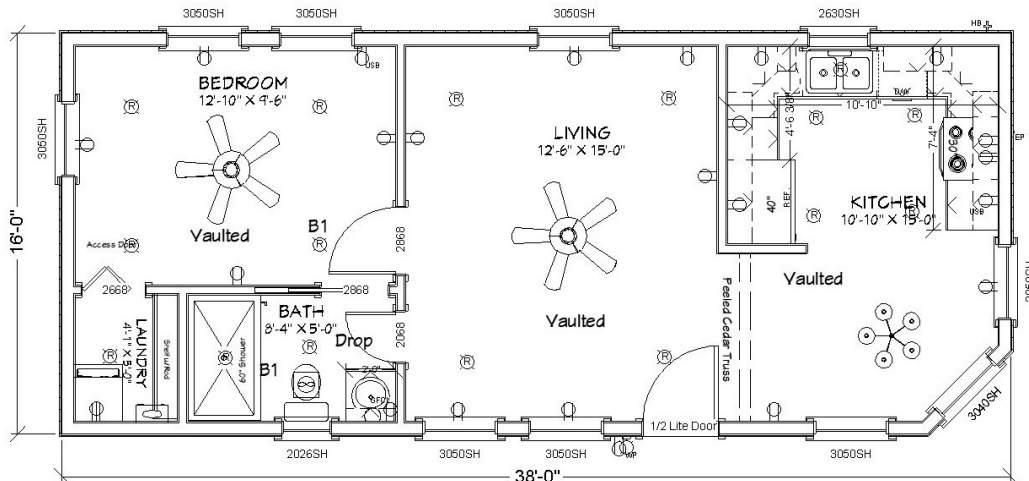
BOONE 101 / 14X28 / 392 SQ FT / 1 BED - 1 BATH



BOONE 102 / 14X30 / 420 SQ FT / 1 BED - 1 BATH



BOONE 103 / 16X38 / 608 SQ FT / 1 BED - 1 BATH



Starting price includes basic options. Upgrade pricing listed below. Pricing includes delivery within 100 miles from Shepherdsville, KY for in state deliveries. Deliveries out of state, check with your sales rep for a quote. Add'l mileage in state is \$9.50/mile.

Boone 101

BASIC OPTIONS \$62,137

| 392 Sq Feet, 1 Bed 1 Bath | Included in Base Price | Upgrades | | | | | |
|--------------------------------|-------------------------------------|----------------------|---------|--------------------------|---------------------|---------------------|-----------------------|
| Exterior | Smart Panel | Board & Batten | \$1,482 | LP Smart Lap | \$4,612 | 8" Split Cedar Log* | \$9,698 |
| Wall Finish | Clear Coat Finish | Airstone Accent Wall | \$27/SF | Wainscot Accent Wall | \$9 / LF (3ft high) | Stained trim | \$4.50/sq ft of cabin |
| Walls | Ponderosa Pine 8" VBoard, clearcoat | Whitewashed Pine | \$784 | Painted White 6" Shiplap | \$2,395 | | |
| Ceiling | Ponderosa Pine VBoard, clearcoat | Whitewashed Pine | \$784 | Painted White 6" Shiplap | \$770 | | |
| Flooring | Laminate Plank Flooring | Vinyl Plank | \$1,747 | | | | |
| Cabinets | Pine | Rustic Hickory | \$654 | Painted | \$1,452 | | |
| Other Options (by size) | Inset corner porch | Cosmetic Dormers (2) | \$1,350 | Reversible Gables (2) | \$3,150 | Shutters | \$72/set |

Boone 102

Basic Options: \$64,533

| 420 Sq Feet, 1 Bed 1 Bath | Included in Base Price | Upgrades | | | | | |
|--------------------------------|-------------------------------------|----------------------|---------|--------------------------|---------------------|---------------------|-----------------------|
| Exterior | Smart Panel | Board & Batten | \$1,569 | LP Smart Lap | \$4,851 | 8" Split Cedar Log* | \$10,146 |
| Wall Finish | Clear Coat Finish | Airstone Accent Wall | \$27/SF | Wainscot Accent Wall | \$9 / LF (3ft high) | Stained trim | \$4.50/sq ft of cabin |
| Walls | Ponderosa Pine 8" VBoard, clearcoat | Whitewashed Pine | \$840 | Painted White 6" Shiplap | \$2,509 | | |
| Ceiling | Ponderosa Pine VBoard, clearcoat | Whitewashed Pine | \$840 | Painted White 6" Shiplap | \$1,497 | | |
| Flooring | Laminate Plank Flooring | Vinyl Plank | \$1,871 | | | | |
| Cabinets | Pine | Rustic Hickory | \$654 | Painted | \$1,452 | | |
| Other Options (by size) | Inset corner porch | Cosmetic Dormers (2) | \$1,350 | Reversible Gables (2) | \$3,150 | Shutters | \$72/set |

BOONE CABIN 103

Basic Options: \$93,245

| 608 Sq Feet, 1 Bed 1 Bath | Included in Base Price | Upgrades | | | | | |
|--------------------------------|-------------------------------------|----------------------|---------|--------------------------|---------------------|---------------------|-----------------------|
| Exterior | Smart Panel | Board & Batten | \$2,104 | LP Smart Lap | \$6,454 | 8" Split Cedar Log* | \$12,620 |
| Wall Finish | Clear Coat Finish | Airstone Accent Wall | \$27/SF | Wainscot Accent Wall | \$9 / LF (3ft high) | Stained trim | \$4.50/sq ft of cabin |
| Walls | Ponderosa Pine 8" VBoard, clearcoat | Whitewashed Pine | \$1,216 | Painted White 6" Shiplap | \$3,079 | | |
| Ceiling | Ponderosa Pine VBoard, clearcoat | Whitewashed Pine | \$1,216 | Painted White 6" Shiplap | \$2,167 | | |
| Flooring | Laminate Plank Flooring | Vinyl Plank | \$2,709 | | | | |
| Cabinets | Pine | Rustic Hickory | \$1,505 | Painted | \$3,439 | | |
| Other Options (by size) | Inset corner porch | Cosmetic Dormers (2) | \$1,350 | Reversible Gables (2) | \$3,150 | Shutters | \$72/set |

*Insulation for walls and ceiling done to state code.

*We can prep for a mini split system by creating a channel in the wall for a drain line, and installing a disconnect on the cabin.

*Log Siding quote is with Smooth Corners. Butt & Pass Log corners additional \$8,853.

*Porches and On site setup is additional.



Lincoln Series



SERIES FEATURES

- ✓ 1 Bedroom
- ✓ 1 Bathroom
- ✓ On-Demand Electric Water Heaters
- ✓ 504-672 Sq Feet
- ✓ Optional screened porch and dormers
- ✓ Inset End Porch





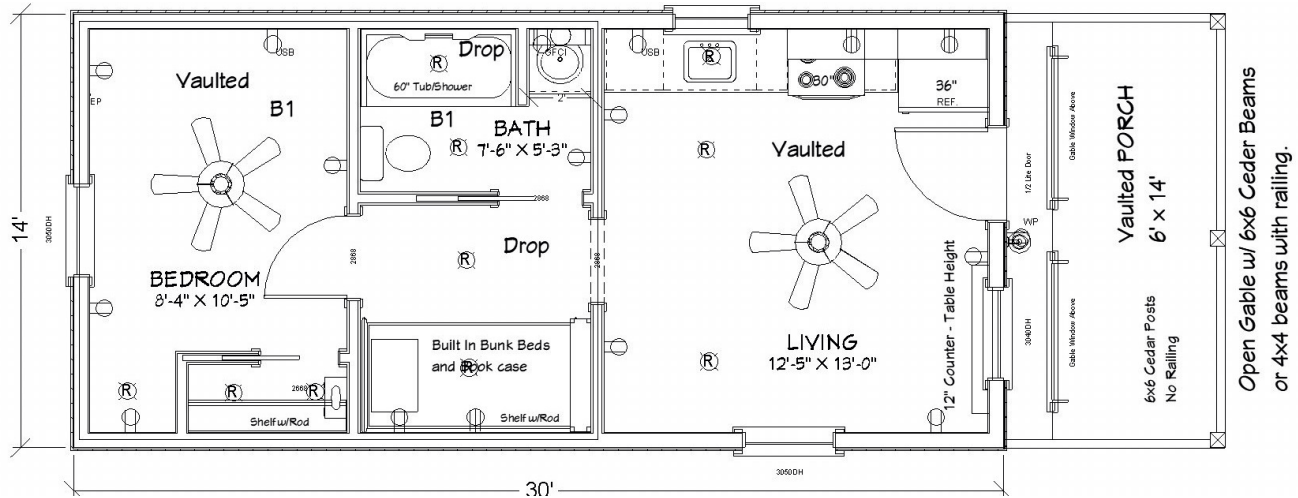
Floorplans

(502)921-0002

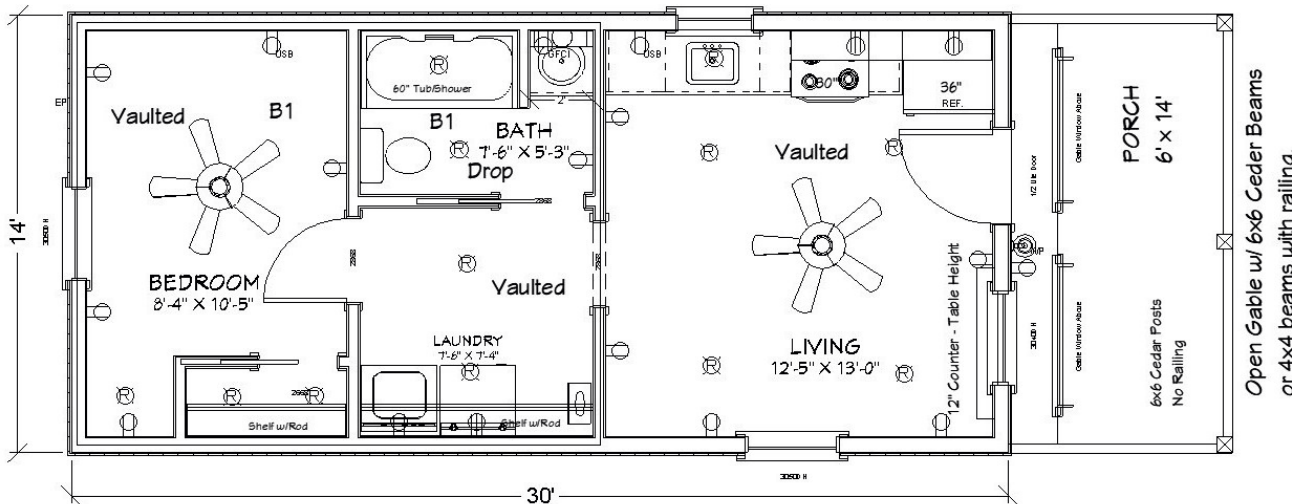


WWW.AMISHMADECABINS.COM

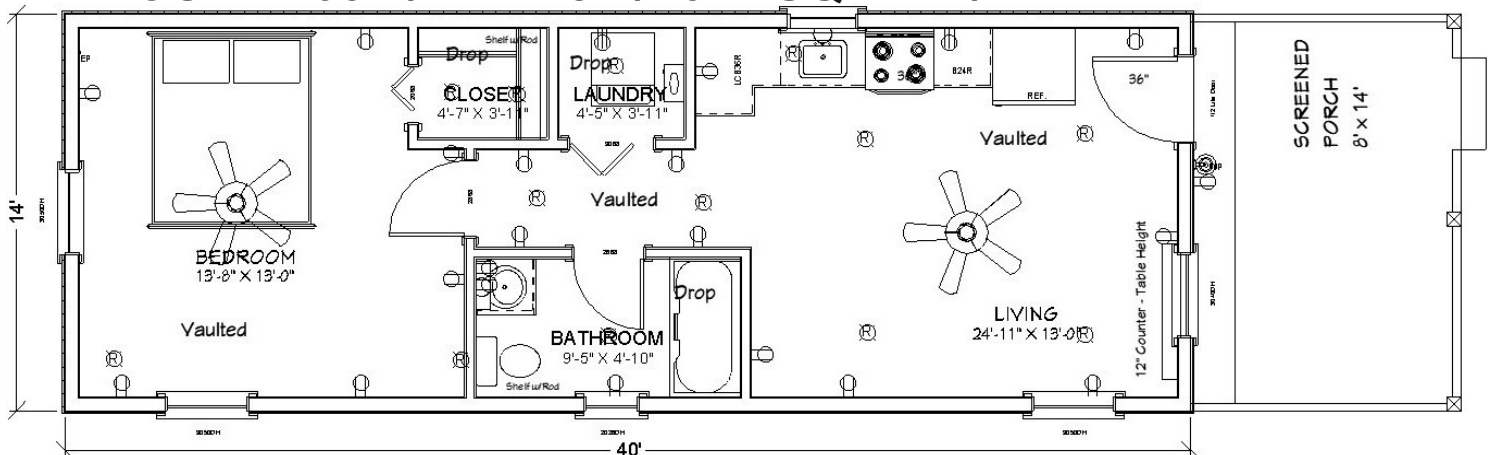
LINCOLN 101 / 14X36 / 504 SQ FT / 1 BED -1 BATH



LINCOLN 102 / 14X36 / 504 SQ FT / 1 BED -1 BATH



LINCOLN 103 / 14X48 / 672 SQ FT / 1 BED - 1 BATH



Starting price includes basic options. Upgrade pricing listed below. Pricing includes delivery within 100 miles from Shepherdsville, KY for in state deliveries. Deliveries out of state, check with your sales rep for a quote. Add'l mileage in state is \$9.50/mile.

LINCOLN CABIN 101

Basic Options: \$79,915

| 504 Sq Feet, 1 Bed 1 Bath | Included in Base Price | Upgrades | | | | | |
|--------------------------------|-------------------------------------|----------------------|---------|--------------------------|---------------------|---------------------|-----------------------|
| Exterior | Smart Panel | Board & Batten | \$1,569 | LP Smart Lap | \$4,851 | 8" Split Cedar Log* | \$10,146 |
| Wall Finish | Clear Coat Finish | Airstone Accent Wall | \$27/SF | Wainscot Accent Wall | \$9 / LF (3ft high) | Stained trim | \$4.50/sq ft of cabin |
| Walls | Ponderosa Pine 8" VBoard, clearcoat | Whitewashed Pine | \$1,208 | Painted White 6" Shiplap | \$2,509 | | |
| Ceiling | Ponderosa Pine VBoard, clearcoat | Whitewashed Pine | \$1,008 | Painted White 6" Shiplap | \$1,796 | | |
| Flooring | Laminate Plank Flooring | Vinyl Plank | \$2,387 | | | | |
| Cabinets | Pine | Rustic Hickory | \$733 | Painted | \$1,637 | | |
| Other Options (by size) | Inset end porch | Cosmetic Dormers (2) | \$1,350 | Reversible Gables (2) | \$3,150 | Shutters | \$72/set |

LINCOLN CABIN 102

Basic Options: \$77,590

| 504 Sq Feet, 1 Bed 1 Bath | Included in Base Price | Upgrades | | | | | |
|--------------------------------|-------------------------------------|----------------------|---------|--------------------------|---------------------|---------------------|-----------------------|
| Exterior | Smart Panel | Board & Batten | \$1,569 | LP Smart Lap | \$4,851 | 8" Split Cedar Log* | \$10,146 |
| Wall Finish | Clear Coat Finish | Airstone Accent Wall | \$27/SF | Wainscot Accent Wall | \$9 / LF (3ft high) | Stained trim | \$4.50/sq ft of cabin |
| Walls | Ponderosa Pine 8" VBoard, clearcoat | Whitewashed Pine | \$1,208 | Painted White 6" Shiplap | \$2,509 | | |
| Ceiling | Ponderosa Pine VBoard, clearcoat | Whitewashed Pine | \$1,008 | Painted White 6" Shiplap | \$1,796 | | |
| Flooring | Laminate Plank Flooring | Vinyl Plank | \$2,387 | | | | |
| Cabinets | Pine | Rustic Hickory | \$733 | Painted | \$1,637 | | |
| Other Options (by size) | Inset end porch | Cosmetic Dormers (2) | \$1,350 | Reversible Gables (2) | \$3,150 | Shutters | \$72/set |

LINCOLN CABIN 103

Basic Options: \$84,388

| 672 Sq Feet, 1 Bed 1 Bath | Included in Base Price | Upgrades | | | | | |
|--------------------------------|-------------------------------------|----------------------|---------|--------------------------|---------------------|---------------------|-----------------------|
| Exterior | Smart Panel | Board & Batten | \$1,984 | LP Smart Lap | \$6,348 | 8" Split Cedar Log* | \$14,747 |
| Wall Finish | Clear Coat Finish | Airstone Accent Wall | \$27/SF | Wainscot Accent Wall | \$9 / LF (3ft high) | Stained trim | \$4.50/sq ft of cabin |
| Walls | Ponderosa Pine 8" VBoard, clearcoat | Whitewashed Pine | \$2,100 | Painted White 6" Shiplap | \$2,800 | | |
| Ceiling | Ponderosa Pine VBoard, clearcoat | Whitewashed Pine | \$1,620 | Painted White 6" Shiplap | \$2,160 | | |
| Flooring | Laminate Plank Flooring | Vinyl Plank | \$2,563 | | | | |
| Cabinets | Pine | Rustic Hickory | \$1,003 | Painted | \$2,131 | | |
| Other Options (by size) | Inset end porch | Cosmetic Dormers (2) | \$1,350 | Reversible Gables (2) | \$3,150 | Shutters | \$72/set |

*Insulation for walls and ceiling done to state code.

*We can prep for a mini split system by creating a channel in the wall for a drain line, and installing a disconnect on the cabin.

*Log Siding quote is with Smooth Corners. Butt & Pass Log corners additional \$8,853.

*Porches and On site setup is additional.



Cross Timber Series



SERIES FEATURES

- ✓ 1-2 Bedroom Options
- ✓ 952 sq feet to 1,120 sq feet floor plans
- ✓ 1-2 Bath Options
- ✓ Open Kitchens
- ✓ On-Demand Electric Water Heaters
- ✓ Two sections connected on site





Floorplans

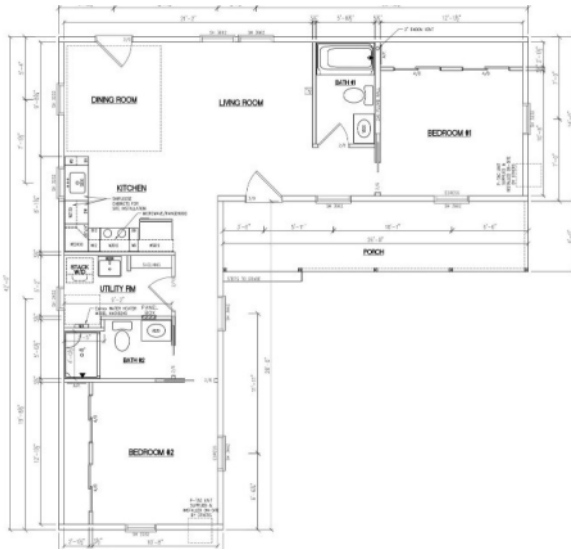
(502)921-0002



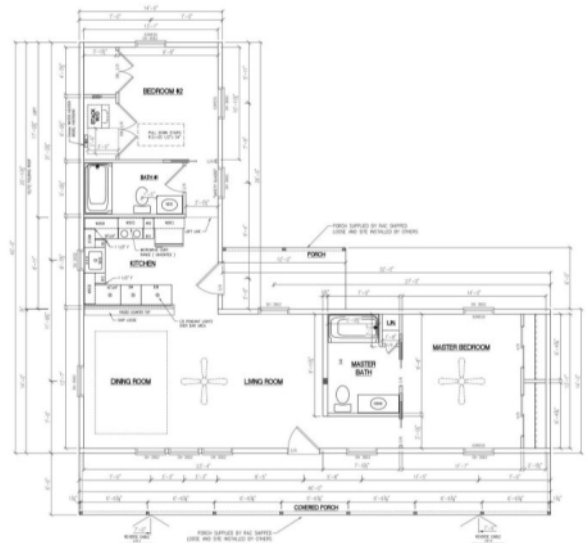
WWW.AMISHMADECABINS.COM

CROSS TIMBER FLOORPLANS COMBINE TWO OR MORE SECTIONS CONNECTED ON SITE.

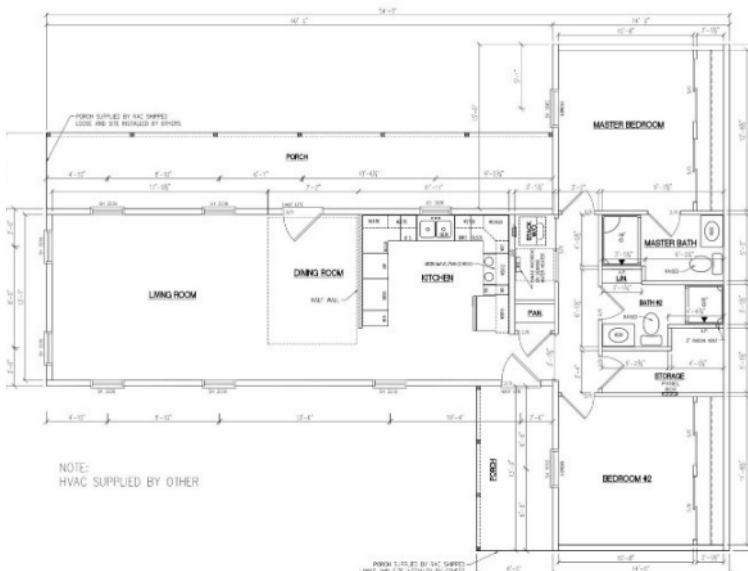
14X40 AND 14X28



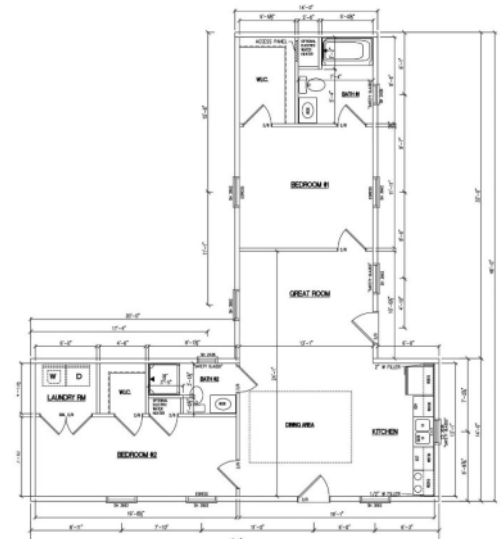
14X40 AND 14X32



14X40 AND 14X40



14X40 AND 14X32





Trophy Peak Series



SERIES FEATURES

- ✓ 1-5 Bedroom Options
- ✓ 1-3 Bath Options
- ✓ On-Demand Electric Water Heaters
- ✓ Hinged Roof Series
- ✓ 6/12 & 10/12 Roof Pitch
- ✓ Open floorplan with or without loft





Floorplans

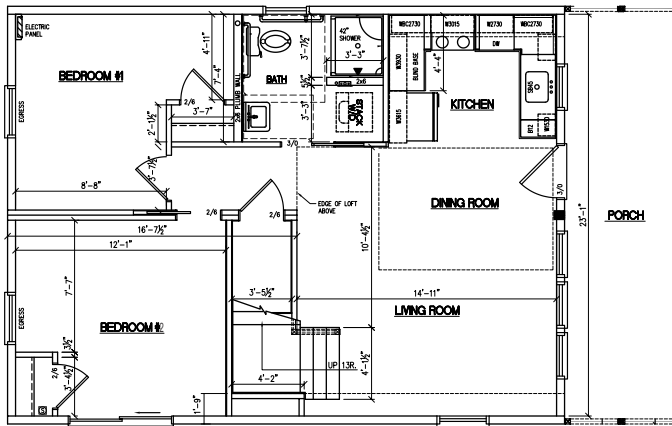


(502)921-0002

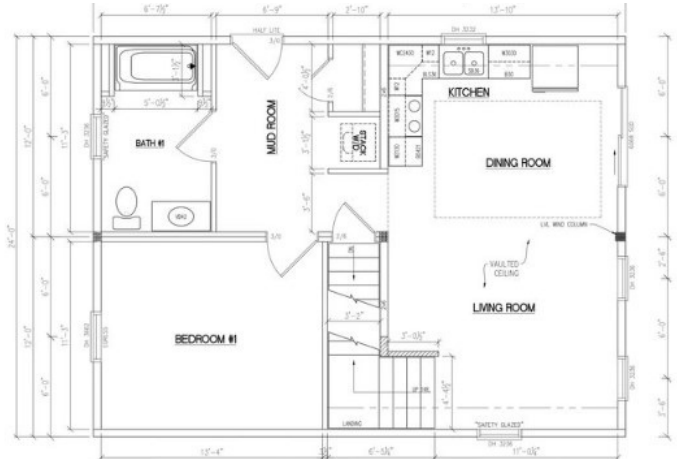


WWW.AMISHMADECABINS.COM

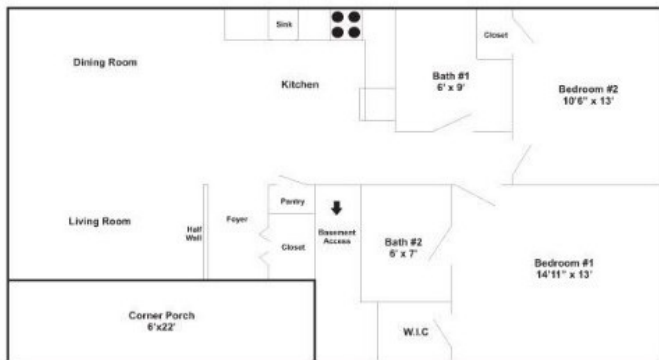
24X32 2 BED W/LOFT



24X32 1 BED W/LOFT



26X48 2 BED W/PORCH



30X52 2 BED W/LOFT



28X52 3 BED



26X40 1 BED W/LOFT





PRICING CHANGING FREQUENTLY DUE TO LUMBER MARKET, CHECK WITH SALES AGENT FOR 7 DAY PRICE QUOTE.

Starting price includes basic options. Upgrade pricing listed below. Pricing includes delivery within 100 miles from Shepherdsville, KY for in state deliveries. Deliveries out of state, check with your sales rep for a quote. Add'l mileage in state is \$9.50/mile.

Cross Timber Series and Trophy Peak Series

Cross Timber Series:

\$163/sq foot

5/12 roof pitch

2x6 walls

2x10 floors

Smart Panel Siding

Two Sections connected on-site
Widths are 14' or 16'

Length Max is 52'

Includes the items showing on the floorplans in regards to window and door count. Pricing based on our standard options.

Upgrades available.

Trophy Peak Series:

\$179/sq foot

*Price does not include site setup - your sales associate will provide a quote for site setup.

This includes the staircase and loft with railing.
Average roof pitch when raised on site is 10/12 roof pitch.

24'-30' Wide Cabins

2x6 walls

2x10 floors

**Can do a 6/12 Roof pitch without loft - Hinged roof would be raised on site
6/12 Pitch Is \$159/sq foot plus price of site setup.

Includes the items showing on the floorplans in regards to window and door count. Pricing based on our standard options.

Upgrades available.

Other Options to add:

| | |
|--|--|
| Reversible Gables (2) | \$2.50/sq foot - sq foot of total cabin size |
| Cosmetic Dormers (2) | \$1,200 |
| Paint fiberglass door(s) | \$140 per side |
| White wash interior walls | \$3.80 sq foot -sq foot of total cabin size |
| Stained kitchen cabinets | starts at \$1125 - based on LF of cabinets |
| Additional window | \$500 each |
| Gable window | \$300 each |
| Shutters | \$75/set |
| 6' sliding glass door | \$1,875 |
| Barn door | \$675 |
| Screen Door | \$375 |
| Additional Cabinets | \$345 per LF |
| Extended Kitchen w. Raised Bar | \$450 LF |
| Board and Batten Siding | \$3/sq foot - sq foot of total cabin size |
| Lap Siding | \$4/sq foot - sq foot of total cabin size |
| Split Cedar Log Siding w/ smooth corners | \$18/sq foot - sq foot of total cabin size |
| Split Cedar with Butt and Pass corners | \$26/sq foot - sq foot of total cabin size |
| Porch Kit | \$35/Sq foot of deck |

Engineered plans - site specific starting at \$2300

Pricing subject to change, contact us for current pricing.

*Living Large series will require additional on-site work to raise the roof from your contractor.

Prices do not include site prep, or any onsite work needed.



Choices and Options

Siding

LP Smart Panel Siding (STANDARD ON ALL MODELS)



Upgrade Options:

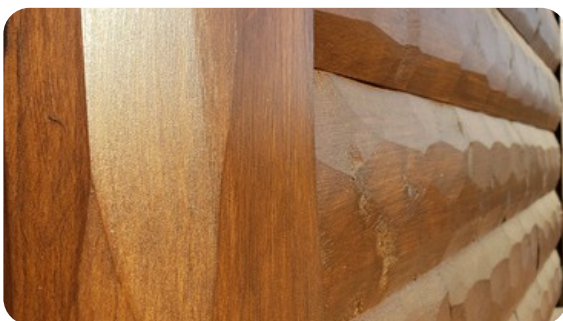
LP Smartboard Board and Batten Siding



LP Smartboard Lap Siding



Split Cedar Log Siding with Smooth Corners



Split Cedar Log Siding with Butt and Pass Corners



Choices and Options Continued

Roof Choices

Metal Roof with Foam Closures



Composite Shingle Roofing



Metal Roofing Color Choices:
28 Gauge - Standard.



Slate



Bright White



Burgundy



Charcoal



Ash Gray



Black



Bronze



Tan



Beige



Ivy



Ocean Blue



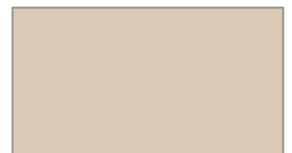
Brown



Red



Clay



Light Stone

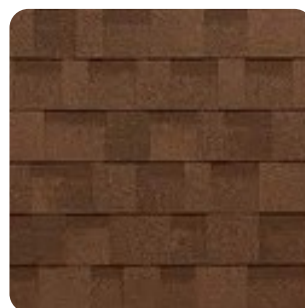
Dimensional Shingle Color Choices:



Black



Gray



Brown



Tan

Choices and Options Continued

Exterior Door Choices

Solid Door



Nine Lite Door



Window Choices

White w/ Grids



White - No Grids



Taupe w/ Grids



Taupe - No Grids



Wall and Ceiling Finishes

Standard Options: (Walls)

Water based clear-coat finished V-Board



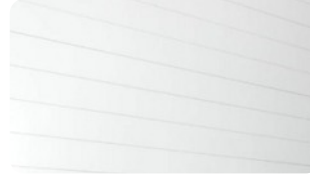
Standard Options: (Ceiling)

Water based clear-coat finished V-Board



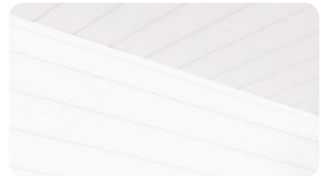
Upgrade Options: (Walls)

White painted Shiplap



Upgrade Options: (Ceiling)

White painted Shiplap



Wall and Ceiling Trim



Standard: 1x4 and 1x1 clear coated trim

Upgraded Wall and Ceiling Trim:



Stained 1x4 and 1x1 Medium stain



Stained 1x4 and 1x1 Dark stain

Interior Lighting **Standard Options:** *All standard options available in Bronze or Brushed Nickel*

Kitchen Sink Lights: 3 Light Track Lighting Wave Bar with directional heads.



Vanity Lights:



Dining Lights:



Ceiling Fans:



All other Lighting:
Recessed Lights
with White plate



Choices and Options Continued

Custom Cabinetry

Standard Options:

Pine



Hardware: All cabinets have Bronze hardware and soft close doors and drawers.



Upgrade Options:

Upgrade options can be ordered with optional Crown Moulding

Hickory



Painted



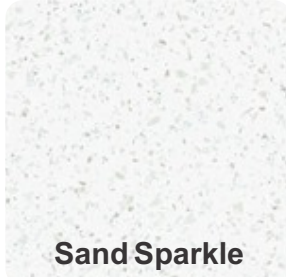
HI-MACS is:

- Hardwearing and resistant
- 100% water-resistant
- Resistant to almost all commercial household chemicals and everyday stains such as fruit acid or red wine
- Scratch resistant and can be repaired in the event of small scratches w/o need to call in a tradesman
- Heat resistant thanks to new Thermalcure technology
- Very easy to clean
- Can be cleaned using a moist cloth and commercial detergent, removing almost all dirt without leaving any residue

Countertops Standard Options: Solid Surface - LG HI-MACS



Macchiato



Sand Sparkle



Nubian

Solid Surface Edge Profile:

Bevel



Round



Kitchen Sinks and Faucets

Standard Options:



Single Basin



Double Basin



Brushed Nickel



Bronze

Upgrade Options:



Farmhouse Apron Front
Single Basin



Farmhouse Apron Front
Double Basin

Choices and Options Continued

Bathroom Sink, Faucets, Tub/Shower, and Commodes

Bathroom Sinks: White porcelain

Faucets: Brushed Nickel or Bronze

Vanities: Match your kitchen cabinet choice

Commodes: All commodes are comfort height, elongated white commodes

Tub/Shower: Your choice tub and/or shower

Standard Options:

60" Shower/Tub Combo w/ surround



Tub hardware / shower head available in Brushed Nickel and Bronze



32" or 48" Shower insert depending on floor plan space



Upgrade Options:

Free Standing Soaking Tub with floor mount faucet



60" Low Threshold shower



60" Roll in ADA Shower



Floor mount faucets available in Bronze and Brushed Nickel



Vanity mirror not included

Choices and Options Continued

Flooring

Standard Options:

Laminate Plank Flooring: Walnut



Laminate Plank Flooring: Gunstock Oak

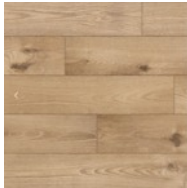


Upgrade Options:

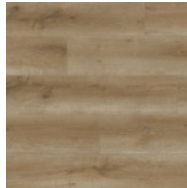
Inhaus SONO Eclipse Vinyl Plank Flooring (Check with sales associate for availability, product shortages due to overseas manufacturing do occur.)



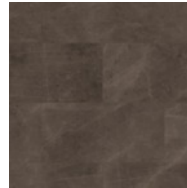
Baywest



Bower



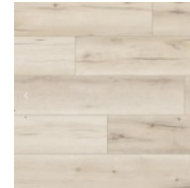
Canim



Centennial
Sandstone



Coffee



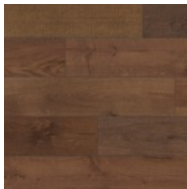
Forest Grove



Heartland
Walnut



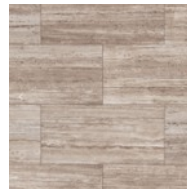
Jasper



Liberty



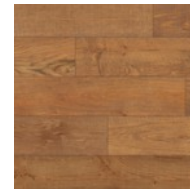
Pearl Travertine



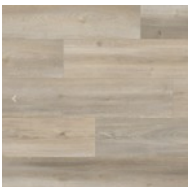
Pepper Travertine



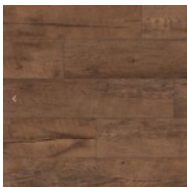
Reposado Carrara



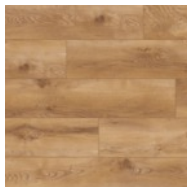
Riverview



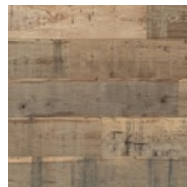
Riviera



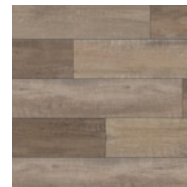
Saloon



Sandhill



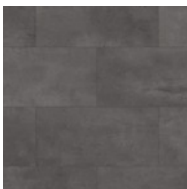
Sante Fe



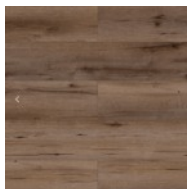
Seawashed



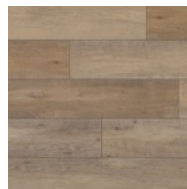
Sesame Sandstone



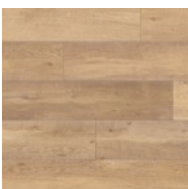
Shadow Castle



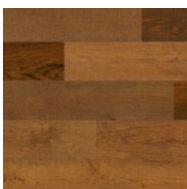
Sheridan Bay



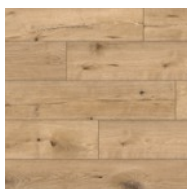
Streamwashed



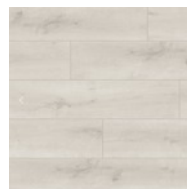
Sunwashed



Tobacco Oak



Trimble White Oak



Winter Oak



Choices and Options Continued

Lofts and Hinged Roof System

Small finished storage lofts are complete with finished walls, flooring, a access ladder and light in loft.

Standard Loft



Hinged Roof System

Our Living Large Series has a hinged roof option. This creates a full 8' tall loft area with a standard staircase for access. Living Large series require extra on-site work and a lift. Check with your sales rep for more details.



Extras

Reverse Gable

False Gables can be added to front and back of cabin to accommodate a deeper porch.



Dormers

Cosmetic only.



Additional Option Pricing

Porch Kit: \$ 35 per sq ft *Extended porches can be added to any model.*

Kentucky customers have the option of having the porch constructed on site for an additional fee. Porches built on site include the floor, but due to the pressure treated lumber the floor will not be stained. This is the responsibility of the customer to have done at a later date. We recommend the porch floor be stained within a minimum of 6 months up to a maximum of 1 year from the date constructed.

Small Loft: \$28 per sq. ft.

Stained Kitchen Cabinets: Starts at \$1125

Additional Window: \$500

Gable Window: \$300

6' Sliding Glass Door: \$1875

Barn Door: \$675

Screen Door: \$375

Additional Cabinets: \$345 per linear ft.

Extended Kitchen with Raised Bar: \$450 per linear ft.



Generic engineered drawings will be provided. Customers outside of Kentucky may require site specific engineered plans. These plans are available starting at \$2300.

Additional charges may apply depending on code requirements for your county and state.

Not responsible for typographical errors, prices to subject to change without notice.

Choices and Options Continued

HVAC Prep / Water Heater Selections

Mini Split System Prep

We can prep your cabin for a mini-split system to be installed on-site.

.....



Water Heater Selections

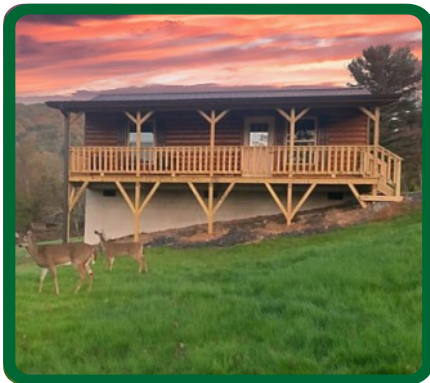
Standard Option:

Electric Tankless Water Heater -
Standard option on request on all cabins



Upgrade Options:

Gas Tankless Water Heater -
Needs to be exterior mount, we
add a gas drop, lines need to be
ran on-site.



502-921-0002
amishmadecabins.com

Amish Made Cabins

SITE PREPARATION INFORMATION FOR CABINS



All cabins need a good pad to prevent leveling issues with your cabin that are not covered under your cabin warranty. Site leveling and preparation is the purchaser's responsibility. Please refer to your cabin contract for height and width requirements for clearance for your cabin. Cabins are extremely heavy and proper pad prep is essential.

CHECK LIST FOR CABIN SITE AND DELIVERY PREP:

- Good access for delivery
- Ground surface level
- Pad site prepared before cabin delivery
- Stable ground conditions
- Any obstructions such as fences, gates, low hanging branches removed before delivery
- Customer will need to have 811 clearance before anchoring.
- Verify what type of foundation/pad is required by state and local government.

Our method is to deliver the cabin directly off our trailer onto the gravel pad or concrete pad, or by crane set. For the off load method to work, the pad site must be less than 6" above grade and not more than 8" below grade to allow our trailer to back in over them and offload. The truck and trailer will then carefully drive out from under the cabin setting it down on top of the concrete blocks. We require a minimum of 70 to 100ft. of clearance straight out from the end of the site so that our delivery rig can pull out from under the cabin, on longer cabins, more space will be needed. When preparing your site know that we must back our trailer out over your site. It is best if the rear tires of the trailer can be within 6' of where you would like the back of the cabin to be placed. We then tilt our trailer and pull away from the home. Pictures of your pad site need to be provided before delivery is scheduled.

FOUNDATION OPTIONS:

Before you get too far into the project you will want to make sure there aren't any codes or restrictions that limit what you can put on the build site. Please familiarize yourself with zoning laws and development restrictions that might put a crimp on your log cabin dreams. Check with your local municipality to see whether you will need permits. * Your county, municipality, and/or State determine what type of foundation is needed.

GRAVEL AND CONCRETE PAD:

•GRAVEL: (Pad option for all cabins up to 900 square feet. Not an option for Multi-Sections)
For a gravel pad site, you will need 4" of road base with 1' extra space on each side. For example, if your cabin is 14' x 18', you need a gravel pad that is 16' x 20'. Gravel needs to be compacted down before home is delivered. This means the pad needs to be compacted down to the point of feeling like concrete. We can not deliver if your pad is not properly compacted down. You will also have leveling issues with your cabin that are not covered under your cabin warranty.

•CONCRETE PAD: (Pad option for all cabins)

A concrete pad needs to be poured at 6" - with a footer that is 12" wide and 12" deep around the perimeter to stabilize the pad. Concrete slab needs to be reinforced for a house slab. See Skid Placement Diagram for your cabin width. If your pad is not reinforced or does not have a proper footer, you may run into issues with your slab not supporting your cabin over time, which is not covered under your cabin warranty.

•CRAWLSPACE OR BASEMENT

The crawlspace or basement needs to be no taller than 30" on one width-end for the delivery team to place the cabin onto the foundation. If the height exceeds 30", temporary fill may be needed for trailer placement.

The foundation must be constructed using cinder blocks, poured concrete, precast or insulated concrete. Foundation also needs double-treated sill plates on top of the wall. Upon delivery, the on-site crew or contractors will secure the cabin using strong ties.

Crawlspace



- Dry-Stack Options / Spot Piers

Cabins can also be placed on pad and pier systems but they MUST be level prior to delivery. Three footings running 10-12 inches longer than the length of the cabin are required for this type of set.

These types of foundations require anchor points different than the basement or crawlspace. Anchors into the footers or pad are generally acceptable as long as they are to the local codes and do not interfere with the delivery trailer's pathway onto the foundation.



- Dry-Stack Options / Spot Piers Cont.

These pictures illustrate dry-stacking piers every 8 feet on a full concrete pad, and then on in-ground concrete pads.



- Crane Set

In some situations a cabin delivery may require heavy equipment to set the cabin. Any equipment needed is the customer's responsibility. On double wide set ups, a second crew will be sent and the set up can take a week or longer to complete. Heavy equipment is not always necessary, mainly it will be needed in steep areas our trucks may not be able to access the property.



502-921-0002
amishmadecabins.com