



Cross Timber Series



SERIES FEATURES

- ✓ 1-2 Bedroom Options
- ✓ 952 sq feet to 1,120 sq feet floor plans
- ✓ 1-2 Bath Options
- ✓ Open Kitchens
- ✓ On-Demand Electric Water Heaters
- ✓ Two sections connected on site





Floorplans

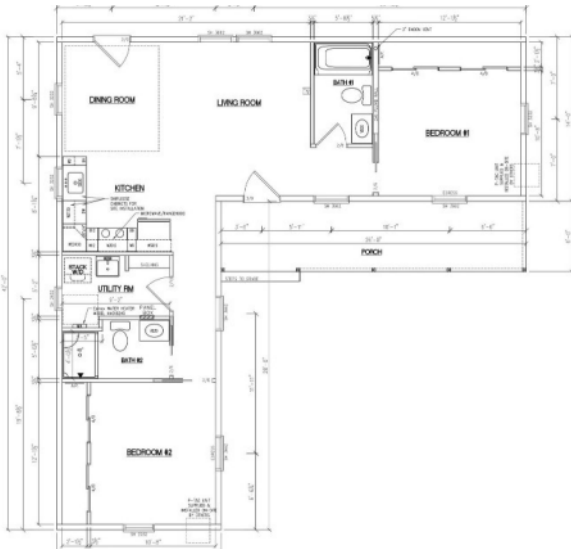
(502)921-0002



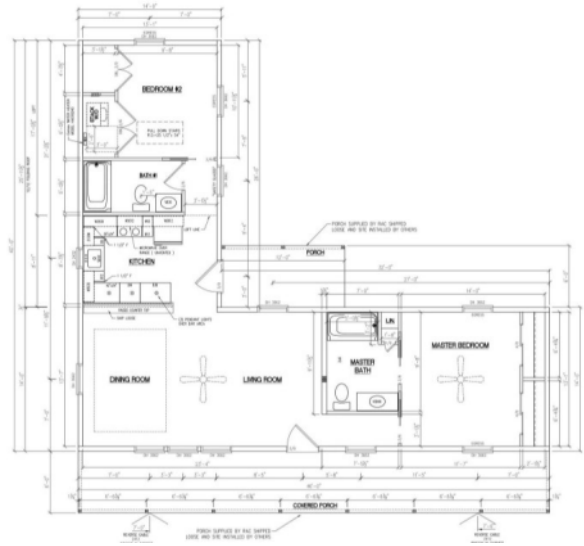
WWW.AMISHMADECABINS.COM

CROSS TIMBER FLOORPLANS COMBINE TWO OR MORE SECTIONS CONNECTED ON SITE.

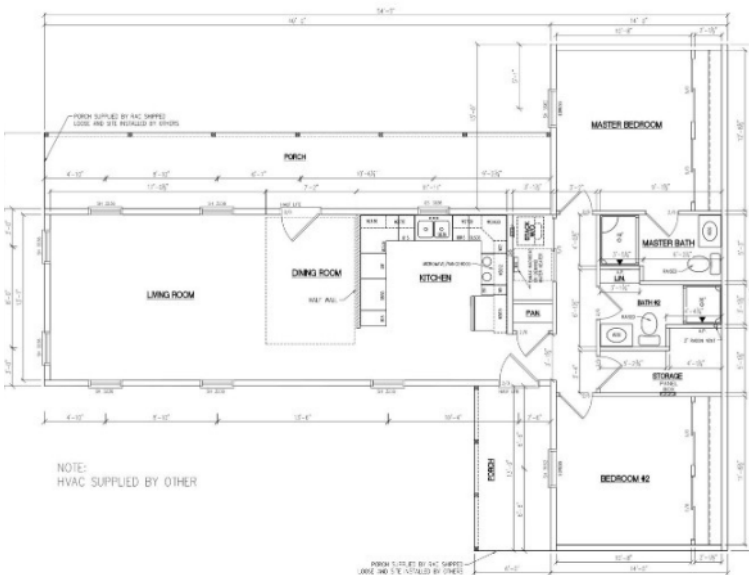
14X40 AND 14X28



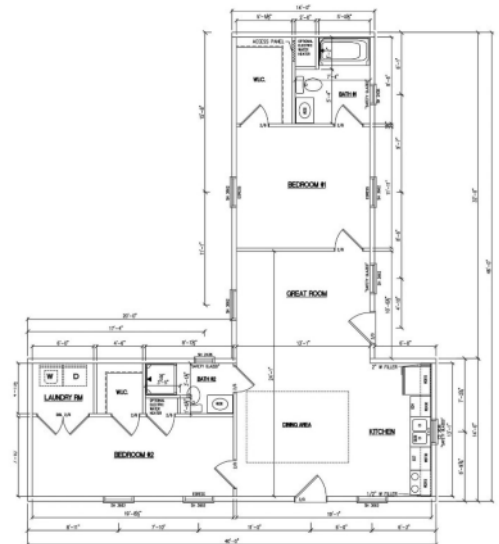
14X40 AND 14X32



14X40 AND 14X40



14X40 AND 14X32





PRICING CHANGING FREQUENTLY DUE TO LUMBER MARKET, CHECK WITH SALES AGENT FOR 7 DAY PRICE QUOTE.

Starting price includes basic options. Upgrade pricing listed below. Pricing includes delivery within 100 miles from Shepherdsville, KY for in state deliveries. Deliveries out of state, check with your sales rep for a quote. Add'l mileage in state is \$9.50/mile.

Cross Timber Series and Trophy Peak Series

Cross Timber Series:

\$163/sq foot

5/12 roof pitch

2x6 walls

2x10 floors

Smart Panel Siding

Two Sections connected on-site
Widths are 14' or 16'

Length Max is 52'

Includes the items showing on the floorplans in regards to window and door count. Pricing based on our standard options.

Upgrades available.

Trophy Peak Series:

\$179/sq foot

*Price does not include site setup - your sales associate will provide a quote for site setup.

This includes the staircase and loft with railing.
Average roof pitch when raised on site is 10/12 roof pitch.

24'-30' Wide Cabins

2x6 walls

2x10 floors

**Can do a 6/12 Roof pitch without loft - Hinged roof would be raised on site
6/12 Pitch Is \$159/sq foot plus price of site setup.

Includes the items showing on the floorplans in regards to window and door count. Pricing based on our standard options.

Upgrades available.

Other Options to add:

Reversible Gables (2)	\$2.50/sq foot - sq foot of total cabin size
Cosmetic Dormers (2)	\$1,200
Paint fiberglass door(s)	\$140 per side
White wash interior walls	\$3.80 sq foot -sq foot of total cabin size
Stained kitchen cabinets	starts at \$1125 - based on LF of cabinets
Additional window	\$500 each
Gable window	\$300 each
Shutters	\$75/set
6' sliding glass door	\$1,875
Barn door	\$675
Screen Door	\$375
Additional Cabinets	\$345 per LF
Extended Kitchen w. Raised Bar	\$450 LF
Board and Batten Siding	\$3/sq foot - sq foot of total cabin size
Lap Siding	\$4/sq foot - sq foot of total cabin size
Split Cedar Log Siding w/ smooth corners	\$18/sq foot - sq foot of total cabin size
Split Cedar with Butt and Pass corners	\$26/sq foot - sq foot of total cabin size
Porch Kit	\$35/Sq foot of deck

Engineered plans - site specific starting at \$2300

Pricing subject to change, contact us for current pricing.

*Living Large series will require additional on-site work to raise the roof from your contractor.

Prices do not include site prep, or any onsite work needed.